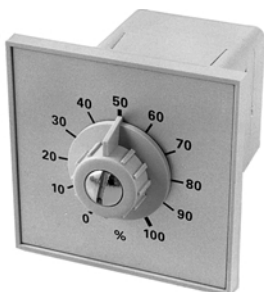


These switches are designed to be compatible with any brand of pneumatic control system. Replaceable scale plates give you a variety of system functions. Standardizing on these switches will reduce your costs and help you become familiar with a single replacement for all uses.



Universal Pneumatic Gradual Switch

This manual switch is used to provide a variable pneumatic signal to any brand of pneumatic device. Used for remote positioning or as a testing device.

ORDERING INFORMATION	
ORDER #	DESCRIPTION
YMC-1001	Pne. Grad. Switch
SCALE PLATES (NOT INCLUDED)	
HDO-1101	BLANK
HDO-1102	0 to 100%
HDO-1103	Increase CW Arrow



2 Position Pneumatic Selector Switches

This manual selector switch is used to direct one or two signals to either one of two ports. Ten scale plates available to perform a variety of functions. Vented and non-vented models are available.

ORDERING INFORMATION	
ORDER #	DESCRIPTION
YMC-2001	DPDT-Non-Vented
YMC-2002	DPDT-Vented
SCALE PLATES (NOT INCLUDED)	
HDO-1201	Occ-Unocc
HDO-1202	Summer-Winter
HDO-1203	On-Off
HDO-1205	Open-Close
HDO-1206	1-2
HDO-1207	Day-Night
HDO-1208	Heat-Cool
HDO-1209	Manual-Auto



3 Position Pneumatic Selector Switches

This manual selector switch is used to switch a pneumatic signal to one of three ports. Eight scale plates available to perform a variety of functions. Vented and non-vented models available.

ORDERING INFORMATION	
ORDER #	DESCRIPTION
YMC-3001	3 Position Non-Vent
YMC-3002	3 Position Vented
SCALE PLATES (NOT INCLUDED)	
HDO-1301	1-2-3
HDO-1302	On-Auto-Off
HDO-1303	Day-Auto-Night
HDO-1305	Heat-Auto-Cool
HDO-1306	Summ.-Auto-Wint.
HDO-1307	Open-Auto-Close



6 Position Pneumatic Selector Switch

This manual selector switch can be used to switch a pneumatic signal to one of six ports. It's economical cost make it a good choice for any multiple switching function of six or less positions.

ORDERING INFORMATION	
ORDER #	DESCRIPTION
YMC-6001	6-Pos. Non-Vented
SCALE PLATES (NOT INCLUDED)	
HDO-1101	BLANK
HDO-1601	1-2-3-4-5-6