

Encapsulated Multivoltage Control Relay



The 2363-010 Relay is an encapsulated multivoltage device providing 10.0 amp SPDT contacts. The relay may be energized by one of the three input voltages: 24Vdc, 24Vac and 115Vac.

Features:

- Universal Mounting
- Multivoltage
- 12" Leads
- 10 Amp Contract Rating

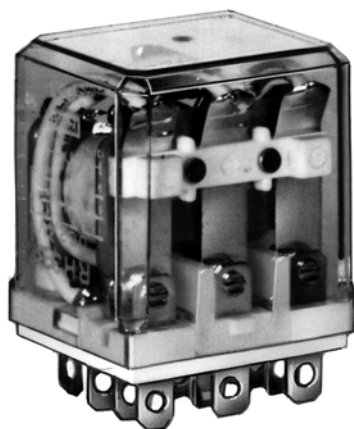
Applications:

- HVAC Service
- DDC Interfacing
- Fire Alarm Systems
- Security Systems

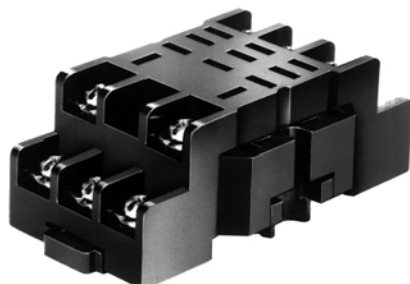
ORDERING INFORMATION		
ORDER #	SWITCH	DESCRIPTION
2363-010	SPDT	Encapsulated Universal Relay

IDEC Midget Relays

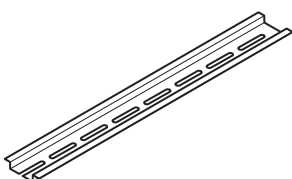
These 10 amp miniature size IDEC relays allow for compact system design in energy management and general purpose use. Available in SPDT, DPDT, 3PDT and 4PDT designs. The blade type mount plugs in to the socket base, which is ordered separately. Available with or without indicator light, which illuminates when relay is energized.



Relay



Socket



39" DIN Rail

ORDERING INFORMATION			
ORDER #		VOLTAGE	SWITCH
WITHOUT LIGHT	WITH LIGHT		
RH1B-U24VDC	—	24Vdc	SPDT
RH1B-U24VAC	—	24Vac	
RH1B-U120VAC	—	120Vac	
RH2B-U24VDC	RH2B-UL24VDC	24Vdc	DPDT
RH2B-U24VAC	RH2B-UL24VAC	24Vac	
RH2B-U120VAC	RH2B-UL120VAC	120Vac	
RH3B-U24VDC	RH3B-UL24VDC	24Vdc	3PDT
RH3B-U24VAC	RH3B-UL24VAC	24Vac	
RH3B-U120VAC	RH3B-UL120VAC	120Vac	
RH4B-U24VDC	RH4B-UL24VDC	24Vdc	4PDT
RH4B-U24VAC	RH4B-UL24VAC	24Vac	
RH4B-U120VAC	RH4B-UL120VAC	120Vac	

ACCESSORIES ORDERING INFORMATION	
ORDER #	DESCRIPTION
SH1B-05	Relay Socket for SPDT
SH2B-05	Relay Socket for DPDT
SH3B-05	Relay Socket for 3PDT
SH4B-05	Relay Socket for 4PDT
BND-1000	DIN Rail—39" Length