

ON/OFF • WATERTIGHT

HYDRAMOTOR® ACTUATOR

For Use With V710 Gas Valve Body

ASCO® General Controls
AH2D
SERIES

General Description

The AH2 Hydramotors are push-type, self-contained, electrohydraulic linear actuators which extend when powered and retract by spring force upon power interruption.

AH2 Hydramotors provide a fast spring return shutoff time of one second or less. When the actuator is mounted to a V710 gas valve, position indicators on both sides of the actuator show the open or closed position of the valve.

The AH2 Hydramotor/V710 gas valve combination provides reliable main line gas control for a wide range of applications, including boilers, furnaces, ovens and all types of industrial and commercial burners. It is available in either a slow or fast opening construction.

Specifications:

Power Requirement: 220 VA max.

Closing Time: One second max.

Opening Time:

Fast Opening: 14 seconds max.

Slow Opening: 26 seconds max.

Note: Opening time is double between -30°F and -40°F ambient.

Opening time increased 20% when operating on 50 Hz.

Enclosure:

Type 1, 2, 3, 3S, 4, 12, and 13 Combination General Purpose, Watertight, Dusttight and Driptight.

Ambient Temperature:

-40° F to 150° F (-40° C to 66° C)

Electrical:

Actuator:

Standard voltages:

24, 120, 240 volts, AC, 60 Hz (or 110, 220 volts AC, 50 Hz)

Proof of Closure Switch:

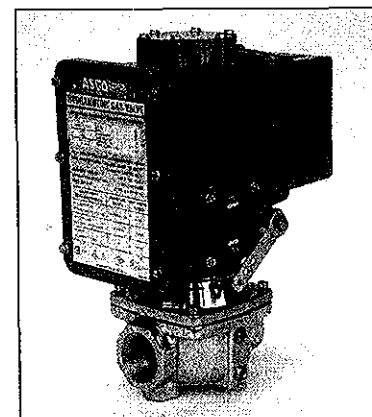
A factory set, non-field adjustable SPDT switch. 1800VA max. connected load (e.g. one 15A load @ 120V or two 3.75A loads @ 240V).

Auxiliary Switches:

One or two integral SPDT switches; field adjustable to actuate at any position of stroke. 1800 VA max. connected load (e.g. one 15A load @ 120V or two 3.75A loads @ 240V).

Electrical Characteristics

Oper. Voltage	Amperes (nominal)		
	Inrush	Opening	Holding
24V	28	8.00	0.73
120V	5.6	1.85	0.11
240V	2.8	0.92	0.05



Series AH2D Hydramotor with V710 valve body.

Installation:

AH2 Hydramotor mounts in any position directly to a V710 valve with 4 set screws.



Damper Arm Rating:

Drives damper in one direction only. 20 lb. max. at 2.85" radius at 20° F to 150° F and 10 lb. max. at -40° F to 20° F.

Approvals:

AH2 Hydramotor with V710 valve.



File # MP932, Vol. 17, Sec. 3;
Safety Valves



Report # L2105011;
Automatic Safety Shut-off Valves



Report # L2105011;
Automatic Valves



JI 3000606
Gas Safety Shut-off Valves

Specifications

Applications	Catalog Number		
	24 V	120 V	240 V
On-Off Slow Opening (14 to 26 seconds)			
Standard on-off	AH2D101A	AH2D102A	AH2D104A
Proof of closure	AH2D101S	AH2D102S	AH2D104S
On-Off Fast Opening (6 to 14 seconds)			
Standard on-off	AH2D111A	AH2D112A	AH2D114A
Proof of closure	AH2D111S	AH2D112S	AH2D114S

Optional Features -

(add appropriate suffix number to catalog number)

One Auxiliary Switch (add suffix 2)

Spring Return Damper Arm (add suffix 3)

Damper Shaft & Arm (add suffix 4)

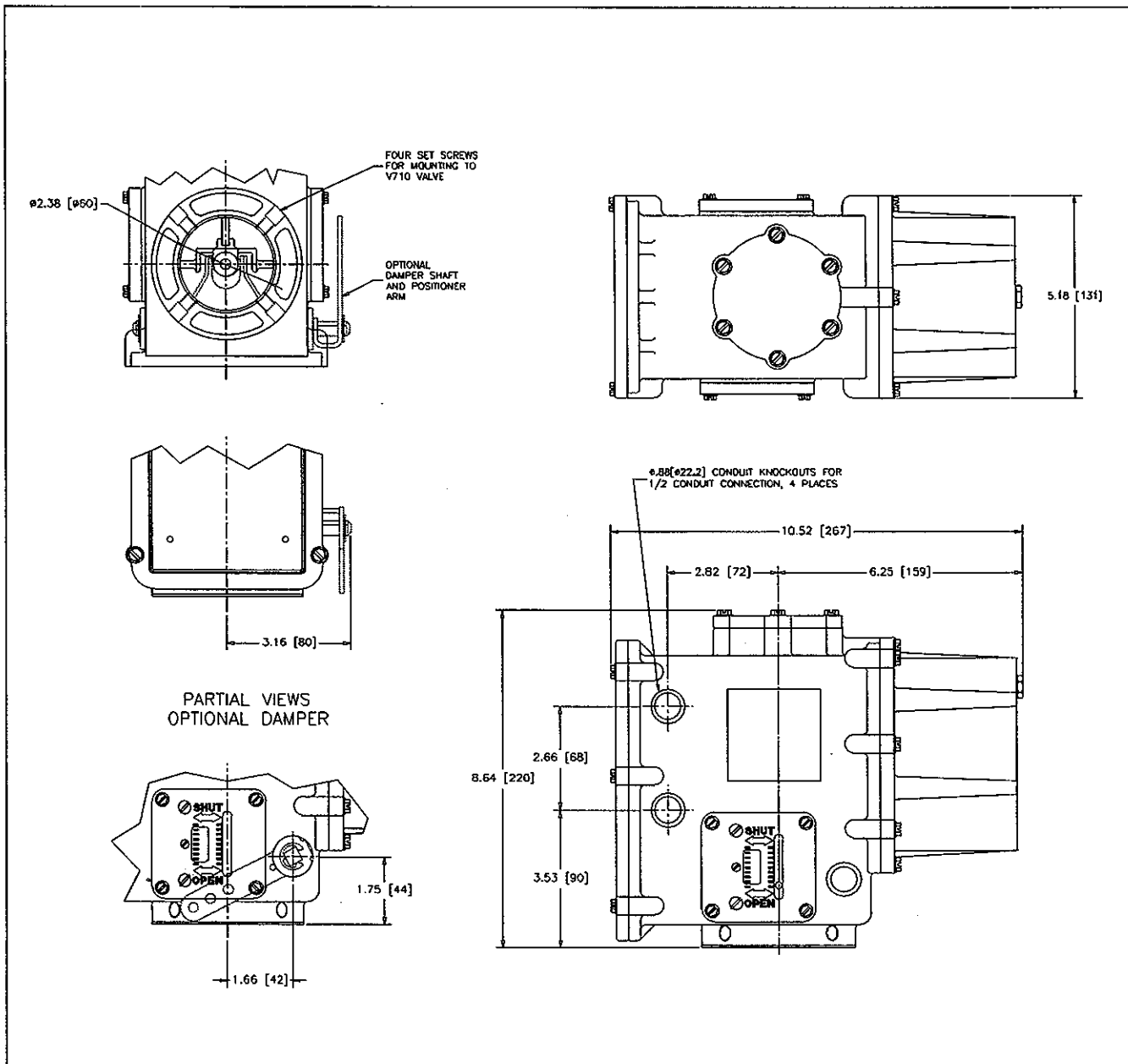
Damper Shaft, Arm & one Auxiliary Switch, (add suffix 5)

Manual Reset (add suffix R)

Ordering Information:

Important: Order by Catalog Number and add suffix number for desired optional feature.
e.g. AH2D112A5R

Dimensions - inches (mm)



ASCO Valve - Americas

Automatic Switch Co.
Hanover Rd., Florham Park, NJ 07932
Tel: (973) 966-2000 Fax: (973) 966-2628
Website: www.ascovalve.com
e-mail: info-valve@asco.com

ASCOLECTRIC limited
Brantford, Ontario N3T 5M8
Tel: (519) 758-2700
Fax: (519) 758 5540

ASCOMATICA, S. A. de C.V.
Mexico City, D. F. CP11700
Tel: (52) 5-596-77-41
Fax: (52) 5-596-77-19

ASCOVAL, Ind E Com Ltda.
06465-030 Barueri, São Paulo, Brazil
Tel: (55) 11-421-5333
Fax: (55) 11-421-5185