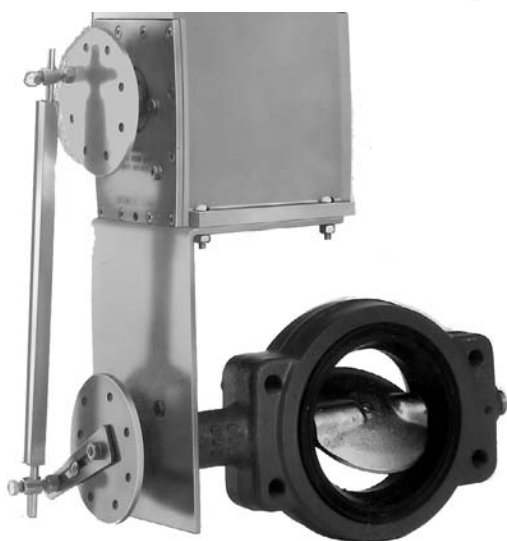


## Butterfly Valves Are The Best Choice For Many Applications

Butterfly valves have a wide variety of uses for high flow applications. They are the best solution where cost is a factor. They are available with pneumatic or electric actuators, from 2" to 24", 2-way, 3-way, for steam, chilled or hot water.



- Cooling Tower Bypass
- Heating/Cooling Change over
- Heat Recovery
- Process Cooling Water
- Economizer Change over
- Head Pressure Control
- Chilled Water
- Hot Water
- Steam
- Other Fluids
- Boiler Reset
- Direct Digital Control Of Chilled Or Hot Water.



ORDERING INFORMATION				
ORDER #	Size	Cv	Weight (lbs)	Type
BVP-20NC-2.5	2.5"	190	17	Normally Closed
BVP-20NC-3	3"	360	19	
BVP-20NC-4	4"	650	23	
BVP-20NC-5	5"	1400	26	
BVP-20NC-6	6"	1900	44	
BVP-20NC-8	8"	3300	67	
BVP-20NC-10	10"	5000	135	
BVP-20NC-12	12"	7500	160	Normally Open
BVP-20NO-2.5	2.5"	190	17	
BVP-20NO-3	3"	360	19	
BVP-20NO-4	4"	650	23	
BVP-20NO-5	5"	1400	26	
BVP-20NO-6	6"	1900	44	
BVP-20NO-8	8"	3300	67	
BVP-20NO-10	10"	5000	135	
BVP-20NO-12	12"	7500	160	

**NOTE:** The actuator spring is 8-13 psi. If a positioner is required, add suffix "-POS"

**For 3-way electric & pneumatic butterfly valves,  
call your NECC sales engineer.**